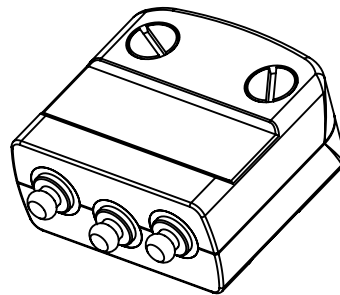
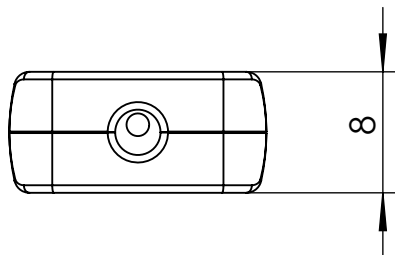
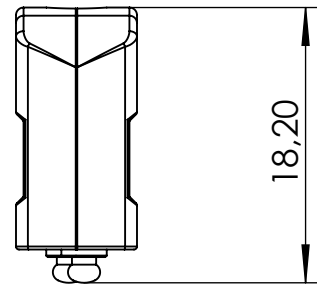
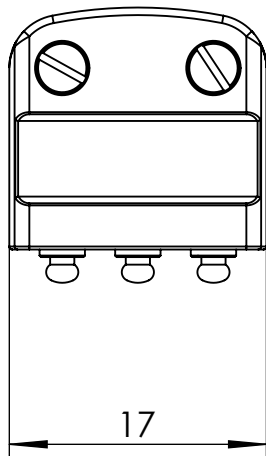


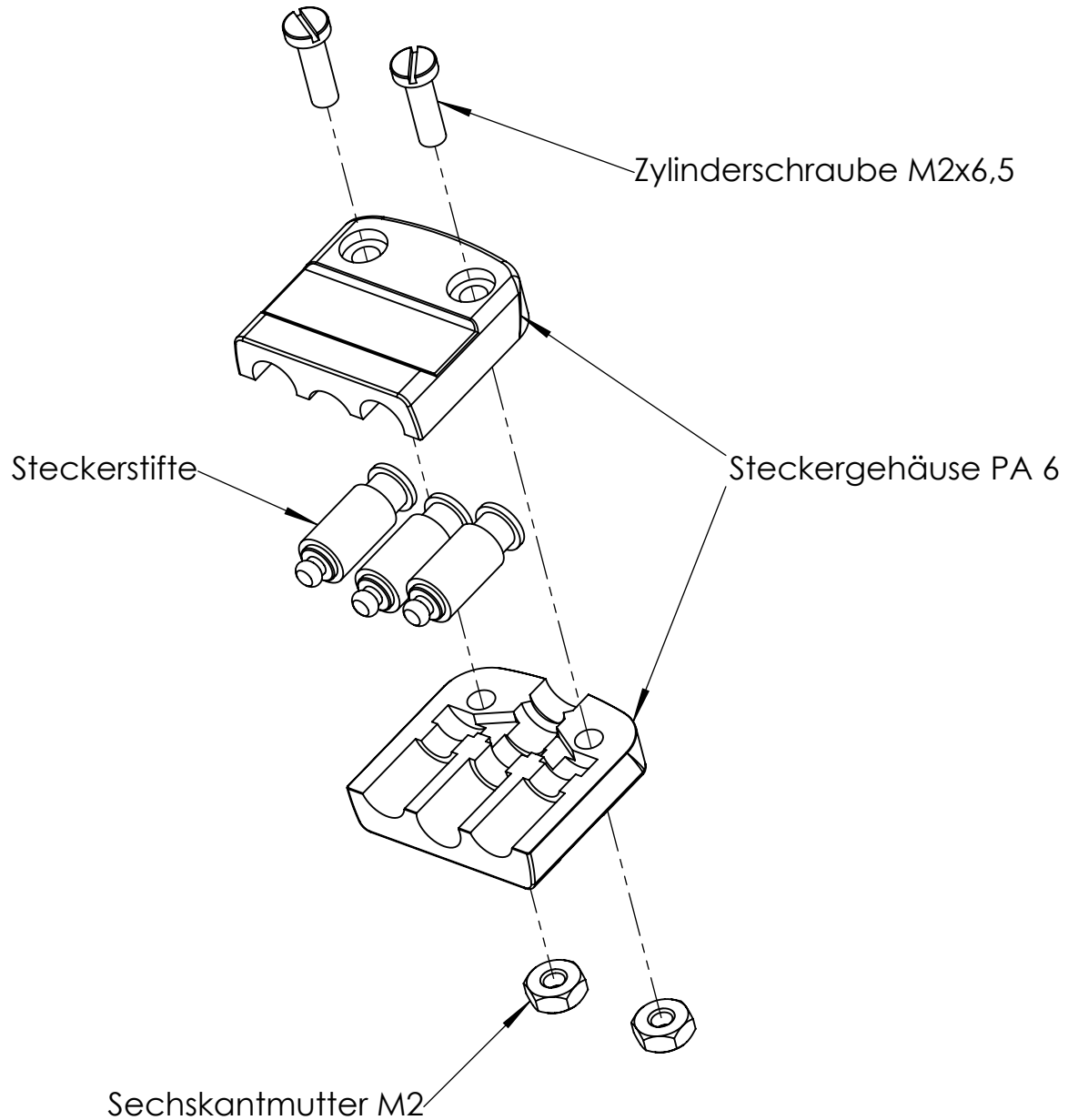
# BRECHKUPPLUNG

Typ: HO 0302 Steckerteil

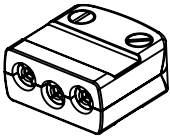
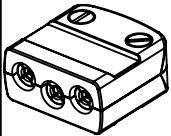
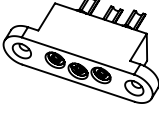
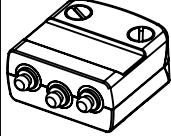
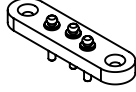


# BRECHKUPPLUNG

Typ: HO 0302 Steckerteil



# TECHNISCHE DATEN

Steckverbinder Gruppe	HO 0300				
Anzahl Pole	3				
	Buchsentteile			Steckerteile	
Bezeichnung	HO 0301, sw	HO 0301, grau	HO 0303	HO 0302	HO 0304
					
Verwendung	Kabel		Einbau	Kabel	Einbau
Artikelnummer	B 3016	B 3103	B 3018	B 3017	B 3019
Material Kontakt- / Haltebuchsen	CuZn39Pb3 (versilbert)			-	
Material Steckerstifte	-			CuZn39Pb3 (vernickelt)	
Material Gehäuse	PA 6 schwarz	PA 6 grau	PA 6 schwarz		
Kabelaußendurchmesser	4 mm		-	4 mm	-
Anschlußquerschnitt	max. 0,8 mm <sup>2</sup>		max. 1,6 mm <sup>2</sup>		max. 0,25 mm <sup>2</sup>
Betriebsspannung (nach VDE 0110)	75V AC 60V DC				
Durchgangswiderstand	< 1 mΩ				
Dauerstrom	4 A				
Betriebstemperaturbereich	-25°C bis + 80°C				
Sonstiges	Verpolungsschutz				